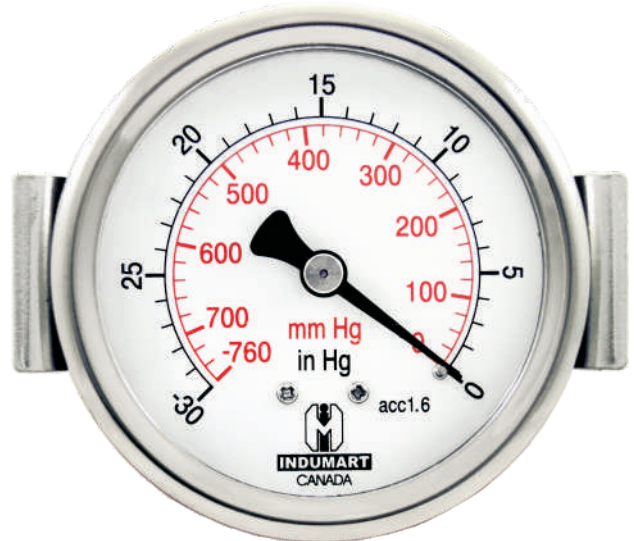




# SERIES: P13

**Dial:** 1½", 2", 2½", 3", 4"  
**Accuracy:** 1.6%, 2.5%



## DESCRIPTION

Indumart *P13 Series* Standard Pressure Gauges with Crimped Bezel are general purpose gauges suitable for a broad range of commercial and industrial applications. These dry gauges are used where liquid or gaseous media are not highly viscous and do not attack copper alloys.

The *P13 Series* is supplied with painted steel case and stainless steel bezel for panel mounting (U-brackets for panel mounting should be ordered as optional accessories) or with stainless steel case and bezel (option), which make them suitable for harsh environments.

## SPECIFICATIONS

<b>Accuracy</b>	2.5% (1½" dial), 1.6% others
<b>Dial Sizes</b>	1½" (40 mm), 2" (50 mm), 2½" (63 mm), 3" (80 mm) 4" (100 mm)
<b>Case</b>	Steel black (standard) st. steel (option)
<b>Bezel</b>	St. steel; triangle rim
<b>Connection</b>	Back or bottom
<b>Thread</b>	1/8" NPT (1½" dial only), 1/4" NPT (2", 2½", 3¼" & 4" dials) BSP thread (option)
<b>Window</b>	Plexiglas
<b>Bourdon Tube</b>	Brass
<b>Max. Temperature</b>	60°C
<b>Range</b>	0...10 to 0...8000 psi; 0...60 to 0...60000 kPa; 0...0.6 to 0...600 bar Vacuum and compound ranges are available; see the Range Table

## ORDER CODES

**Model P13**

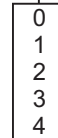
### CONNECTION

Back  
Bottom



### DIAL SIZE

40 mm (1½")  
50 mm (2")  
63 mm (2½")  
80 mm (3")  
100 mm (4")



### OPTIONS (more than one option may be selected)

Stainless Steel Case  
BSP Thread  
U-bracket for panel mounting



*Example: P13T2-TB,MU*